

# Technical Manual



**PRIMA**<sup>alpha</sup> WeatherClad

# Contents

## PRIMA<sup>α</sup> WeatherClad

### Designed to Attain Pure Luxury

Aesthetic Cladding | External Wall Cladding

---

#### 1. INSTALLATION \_\_\_\_\_ 03

- 1.1 Framing & Fastening
- 1.2 Surface Clearances
- 1.3 Installation Procedure

# INSTALLATION

## Framing & Fastening

PRIMA<sup>alpha</sup> WeatherClad can be installed either on timber or steel framing. A 35mm minimum stud width is required for both timber and steel frames. Only seasoned timber frame should be used. The steel frame must be in the BMT (base metal thickness) range of 0.55 to 1.6mm. Stud spacing kept at maximum of 600mm.

PRIMA<sup>alpha</sup> WeatherClad can be fixed with concealed and exposed/face fastening. The face nail will need to be pre-drilled on the upper board prior to nailing. The fasteners used for timber and steel framing are as Table 1 below:



Table 1.1: Timber Frame		Table 1.2: Steel Frame	
Concealed Fixing	Exposed Fixing	Concealed Fixing	Exposed Fixing
40 x 2.8mm fibre cement nail, Class 3	60 x 3.15mm bullet head nail, Class 3	Self-Embedded Self Drilling Wing Tek Screw 8 x 40mm, Class 3	Self-Embedded Self Drilling Wing Tek Screw 8 x 52mm, Class 3

For fastening to timber, the minimum edge distance to the end of the board is 20mm and 50mm for hand and gun nailing respectively. Refer Figure 1 and 2 for concealed and exposed fastening.

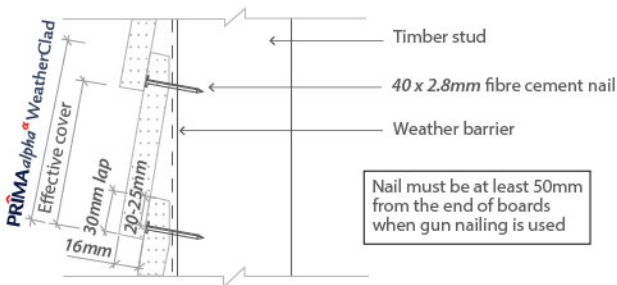


Figure 1: Concealed Nailing

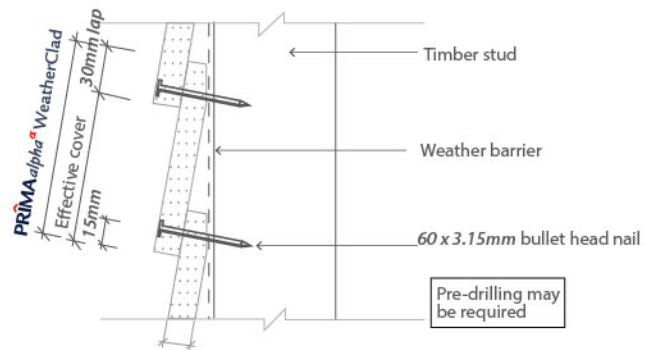


Figure 2: Exposed Nailing

## Surface Clearances

Provide a minimum of 150mm ground clearance between the bottom edge of **PRIMA<sup>alpha</sup>** WeatherClad (or starter strip) and the earth as shown in Figure 3. The plank must be overhang at the bottom plate on a concrete slab by 20- 50mm. Maintain a minimum of 50mm clearance between **PRIMA<sup>alpha</sup>** WeatherClad and roofs and decks, refer **Figure 4**.

Do not install external cladding such that it will remain in contact with water and ground.

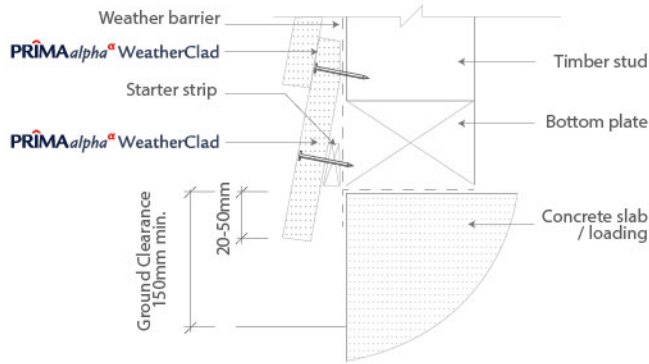


Figure 3: Foundation Detail

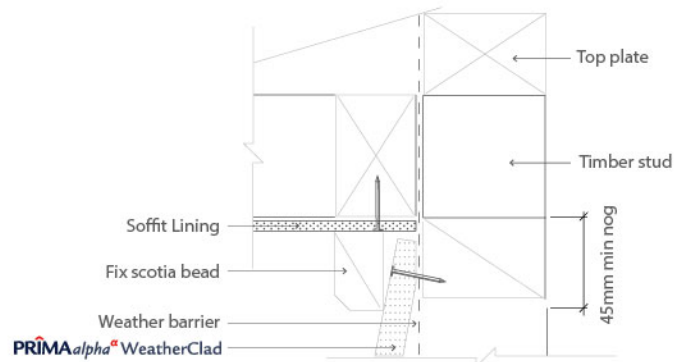


Figure 4: Soffit Detail

# INSTALLATION

## Installation Procedure

These steps provide a general guide for installation of **PRIMA<sup>alpha</sup>** WeatherClad siding

1. Ensure product is of acceptance quality and dry prior to installation
2. Ensure framing is true and align prior to fixing of **PRIMA<sup>alpha</sup>** WeatherClad .
3. Apply weather barrier over the frame work for external application.
4. Fix flashing at all internal and external corners and head of openings such as doors and windows.
5. Secure a starter strip along the bottom plate.
6. Use a water level to locate the top edge of the first course of the siding.
7. Fix the first siding starting from external corner. Fasten the bottom edge of the siding to each stud or bottom plate through the starter strip, refer Figure 3.
8. Fix the balance of the sidings of first course around the building.
9. The horizontal lap of **PRIMA<sup>alpha</sup>** WeatherClad must be at 30mm minimum.
10. Before fixing the second row of siding, calculate the overlap so a near full width of siding will finish at the top of the building.
11. Use a piece of timber or plank to fabricate a lap gauge to ensure the siding installation is level and uniform coverage. Check level occasionally.
12. The ends of **PRIMA<sup>alpha</sup>** WeatherClad are joined off-stud by means of tongue and groove edges. The tongue and groove joints must be at minimum of 100mm from the side of a stud, refer **Figure 5**. Joints must be staggered by a minimum of 600mm from the adjacent joints, refer **Figure 6**.
13. Flexible sealant must be applied in the tongue and groove joint during the installation.

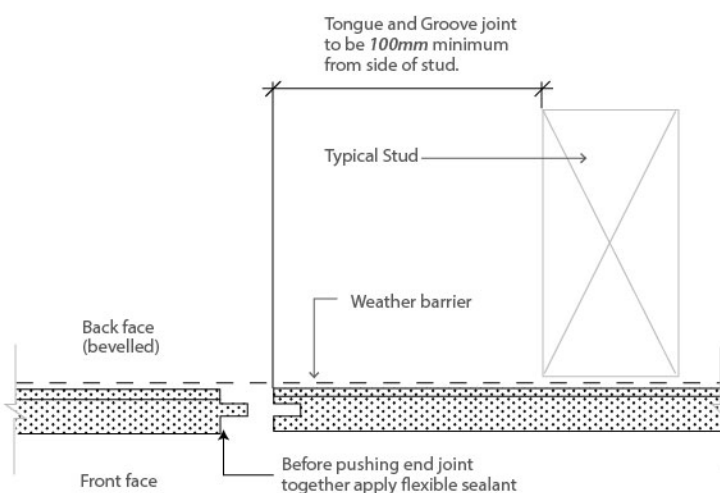


Figure 5 : Tongue and Groove Joint

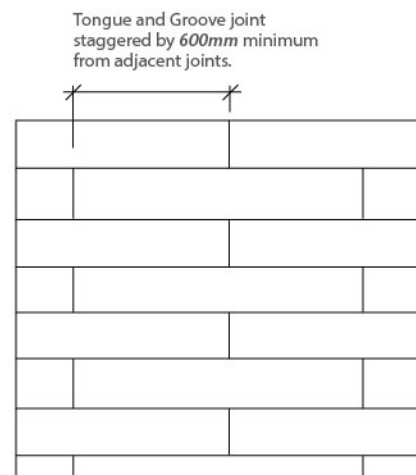


Figure 6 : Staggered Joints



Termite Resistant



Fire Resistant



Water Resistant



Weather Resistant



Environmentally  
Friendly



Superior Paint  
Adhesion



High Workability



Aesthetically  
Pleasing



50 Years  
Durability



For more information, please contact us at:



**SAINT-GOBAIN PRIMA SDN BHD** (579898-W)

Level 19, Tower 5, Avenue 7 The Horizon,  
Bangsar South City, No. 8, Jalan Kerinchi,  
59200 Kuala Lumpur, Malaysia

General Line 1: +603 7781 1977 | General Line 2: +6012 781 1797

[www.primafibreceement.com](http://www.primafibreceement.com) | [www.saint-gobain.my](http://www.saint-gobain.my)

[f](#) [in](#) [v](#) [@](#) [+](#) saintgobainprima